



## ***Giving Our Children the Tools to Succeed: 2014 – 2016***

### **3-year Impact Report to Investors**



NORTH TEXAS  
COMMUNITY  
FOUNDATION

## **ToolBox 2014 - 2016 Funding Partners**

### **North Texas Community Foundation Endowed Funds**

Alann P. and Charles F. Bedford Endowment Fund  
Maurine V. Goodrich Fund  
Hazel Vaughn Leigh - Youth Fund  
Margaret Mann Wilson Fund  
Youth Assistance Fund

### **North Texas Community Foundation Donor Advisors & Friends**

Anonymous Friend  
Stephanie B. Baker  
Linda C. and Don E. Bowden Family Foundation  
Mr. and Mrs. L.O. Brightbill, III Charitable Fund  
Richard K. and Lois B. Craig Family Fund  
Cravens Family Fund  
Robert A. and Jane W. Ferguson Fund  
Heath Family Fund  
Jenny A. and Michael L. Herman Charitable Fund  
Hodges Fund  
Allen and Janet Hodges CCG Fund  
The Landreth Foundation  
Gail W. and W.A. Landreth Jr. Charitable Fund  
Mollie and Garland Lasater Charitable Fund  
Martha V. Leonard Fund  
Nicholas and Louella Martin Charitable Fund  
Si and Buck Martin Legacy Fund  
Doug & Jayne Orr Charitable Fund  
William C. Perry and Paul A. Nelson Charitable Fund  
Tim & Elaine Petrus  
Beth Rivers  
Virginia Street Smith Charitable Fund  
Stevenson Family Charitable Fund  
Vernell and Debra Sturns Charitable Fund  
George C. and Sue W. Sumner Fund  
Lisa and Burch Waldron Charitable Fund  
Sharon Ann McCulloch-Wells and John W. Wells Endowed Fund  
Clinta Williams  
Zoota Family Foundation Fund

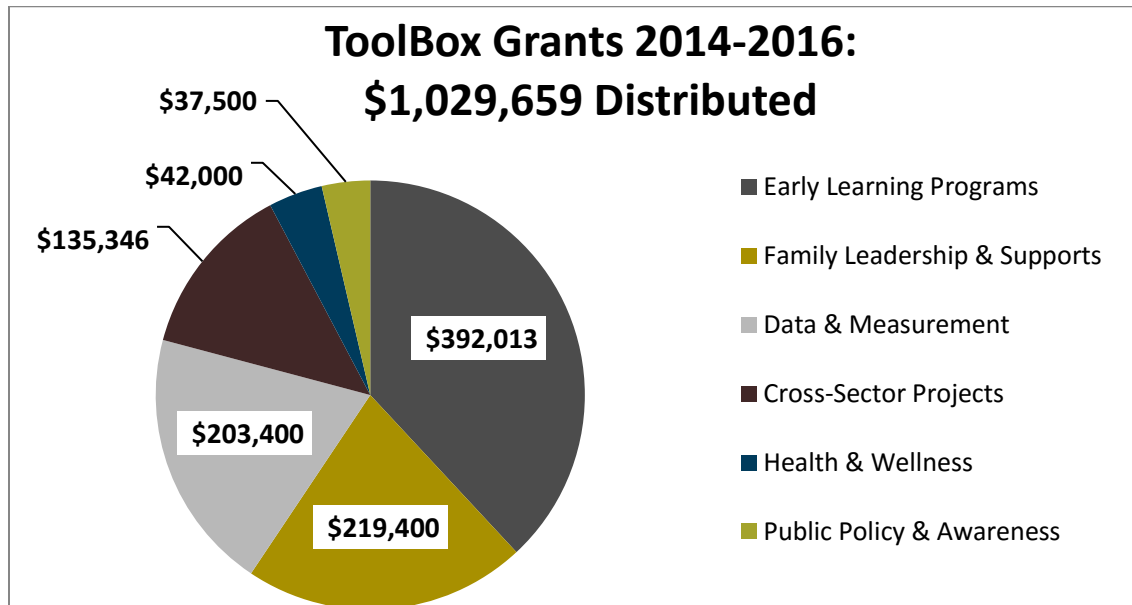
### **Private Foundations**

BNSF Railway Foundation  
Gregory A. and Laura E. Bird Foundation  
Meta Alice Keith Bratten Foundation  
Amon G. Carter Foundation  
Fort Worth Foundation  
Helen Irwin Littauer Educational Trust, Bank of America, N.A. Trustee  
The Miles Foundation  
R4 Foundation  
Rainwater Charitable Foundation  
Rees-Jones Foundation  
Sid W. Richardson Foundation  
Thomas M., Helen McKee and John P. Ryan Foundation  
Walsh Foundation  
Crystelle Waggoner Charitable Trust, Bank of America, N.A. Trustee

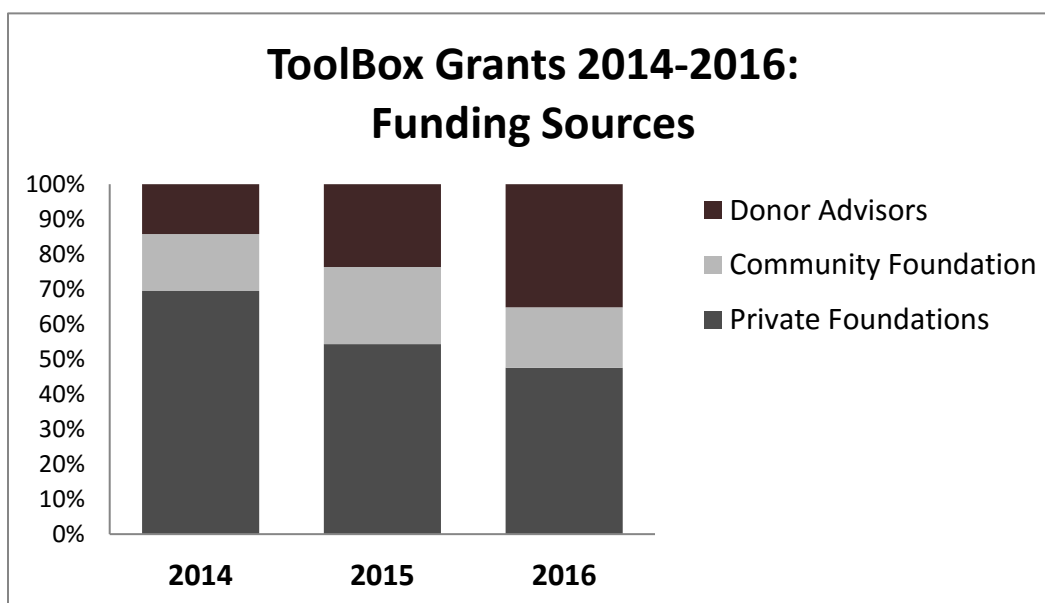
## Overview

The ToolBox Grant program at the North Texas Community Foundation provides nonprofits with the resources they need to implement vital programs and improve their strength and stability. Grant focus areas are designated on a three-year cycle and address areas of need for the North Texas community.

The focus of the 2014-2016 cycle was on the early learning sector. These grants allowed organizations to provide high-quality early learning opportunities to the children of Tarrant County. Through this investment, the North Texas Community Foundation aimed to improve outcomes for children and produce lasting benefits for our community.



Over the 3-year period, donor advisor investments increased by more than 160% and grew to represent more than a third of the funds deployed.



# COMMUNITY INVESTMENTS IN EARLY LEARNING LEVERAGE IMPACT

2013	<ul style="list-style-type: none"> <li>• Community Foundation Staff Research: Early Learning</li> <li>• National League of Cities provides training and technical assistance to Early Learning Alliance (\$75k)</li> </ul>
2014	<ul style="list-style-type: none"> <li>• ToolBox 2014-2016: Giving Our Children the Tools To Succeed <b>\$303k awarded to 24 Non-Profits</b></li> <li>• Early Learning Alliance (ELA) launched to align strategies and programs serving Tarrant County children</li> <li>• Early Learning Summit with Nobel Laureate James Heckman</li> </ul>
2015	<ul style="list-style-type: none"> <li>• ToolBox Year 2: Giving Our Children the Tools To Succeed <b>\$401k awarded to 32 Non-Profits</b></li> <li>• Donor Advisor participation in ToolBox increases by 90%</li> <li>• Mayor Betsy Price, ELA Chair and Foundation travel to Washington D.C. to discuss Early Learning</li> <li>• Fort Worth City Council adopts Early Learning as Top 5 legislative priority</li> <li>• FWISD awarded federal Home Visiting Grant (\$5.2M), providing FT staff for ELA</li> <li>• Community Foundation Annual Luncheon attendees award Think Beyond grant to ELA (\$10k)</li> <li>• "Raising of Fort Worth" - Quarterly public forum launched</li> </ul>
2016	<ul style="list-style-type: none"> <li>• ToolBox Year 3: Giving Our Children the Tools To Succeed <b>\$346k awarded to 27 Non-Profits</b></li> <li>• Donor Advisor participation increases by 43%</li> <li>• ELA grows to 58 member organizations</li> <li>• <i>Growing Up in North Texas</i> Tarrant County community indicators report</li> <li>• <i>Race &amp; Equity in Fort Worth</i> Report examines racial disparities in family well-being</li> <li>• Child Care Professional State Registry pilot launched in Fort Worth</li> <li>• Texas awards ELA 2yrs of technical assistance to implement Results Based Accountability</li> <li>• City launches community-wide literacy initiative: Fort Worth Literacy Project (\$814K)</li> <li>• MHMR secures federal Project LAUNCH Grant to address social/emotional health (\$305k over 3.5 years); ELA partners will support implementation</li> <li>• MHMR secures federal HOPES III Grant to prevent child abuse (\$5.6M over 5 years); ELA partners will support implementation</li> <li>• Community Foundation awarded Alliance for Early Success fellowship (Gates/Buffer Foundations)</li> <li>• Robert Wood Johnson Foundation designates Fort Worth a "Bright Spot" for early learning</li> <li>• Foster Care Redesign (pending)</li> <li>• City of Fort Worth establishes first time "Education" budget (\$900K)</li> </ul>

2017: Community Foundation Staff Research for ToolBox Cycle #3

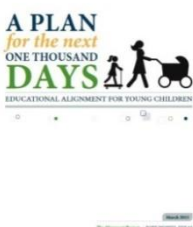
## Resources

Throughout the 3-year cycle, multiple resources were made available by the Community Foundation, opening doors to cross-sector collaboration.



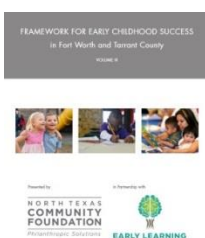
### Early Learning Summit

In 2013, Fort Worth's early learning practitioners began working in conjunction with the National League of Cities to align early childhood programs and elementary education to prepare children for educational success by the time they reach the third grade. In 2014, Fort Worth hosted practitioners from across Texas, along with economist and Nobel Laureate James Heckman, for a state-wide summit meeting to make state legislative and executive leaders aware of ways in which they can be supportive of their goals. The City unveiled its five-year strategic plan for the early learning sector.



### A Plan for the Next 1000 Days

In 2014, the Early Learning Alliance developed a plan to align human (family and neighborhood engagement), technological (assessment and data sharing), and instrumental (professional development) resources to improve child well-being in Tarrant County.



### Framework for Early Childhood Success

In order for all children and families in Fort Worth and Tarrant County to thrive, sound building blocks must be in place. The North Texas Community Foundation developed this Framework for Success to help inform execution, funding and capacity-building strategies. The Framework for Success has three key elements – target populations, core components and accelerators.



### *Growing Up in North Texas:*

#### *A Community Assessment for Tarrant County*

We developed Growing Up in North Texas -- together with Child Care Associates and Children at Risk -- to help civic, nonprofit and philanthropic leaders develop programs and policies that improve outcomes for local children at risk for poverty, neglect and abuse. By providing ready access to information and insights from local experts, we aim to foster informed public discourse, track progress on shared civic goals and report on change in 4 key areas: education, health, safety, and economic well-being.



### *State of Texas Children 2016: Race and Equity in Fort Worth*

The State of Texas Children report is part of the Kids Count project, a national and state-by-state effort to track the status of children in the U.S. The report, sponsored by the North Texas Community Foundation, reveals how policies have created and maintained unequal opportunities and large disparities in child poverty across race, ethnicity and gender.

## **TOOLBOX GRANTEES 2014-2016, Total Funding: \$1,029,650**

*Note: Several organizations received support in multiple Toolbox categories*

### ***Cross-Sector Projects***

AB Christian Learning Center  
CHILDREN AT RISK  
CNM Connect  
First3Years  
Leadership Fort Worth  
Lena Pope  
The Parenting Center  
Texas Education Grantmakers Advocacy Consortium  
University of North Texas Health Science Center

### ***Family Leadership and Supports***

AB Christian Learning Center  
Alliance for Children  
Arlington Life Shelter  
CASA of Tarrant County  
Child Study Center  
Fortress Youth Development Center  
Fort Worth Museum of Science and History  
Fort Worth Opera  
Fort Worth Public Library Foundation  
Girls, Inc. of Tarrant County  
Imagination Fort Worth  
Kids Hope USA  
Lena Pope  
Literacy United  
Love Never Fails  
Mission Arlington/Mission Metroplex  
Partners for Refugee Empowerment  
Presbyterian Night Shelter  
Recovery Resource Council  
The Parenting Center  
University of North Texas Health Science Center

### ***Health and Wellness***

Cook Children's Health Foundation Fort Worth  
Drowning Prevention Coalition  
Mothers' Milk Bank of North Texas  
North Texas Area Community Health Centers

### ***Public Awareness and Policy***

First3Years  
Texans Care for Children

### ***Data and Evaluation***

Alliance for Children  
Arlington Life Shelter  
Botanical Research Institute of Texas  
Boys & Girls Club of Greater Fort Worth  
Center for Transforming Lives  
Childcare Associates  
CNM Connect  
Educational First Steps  
Fort Worth Opera  
Girls Inc. of Tarrant County  
Lena Pope  
NewDay Services for Children and Families  
The Parenting Center

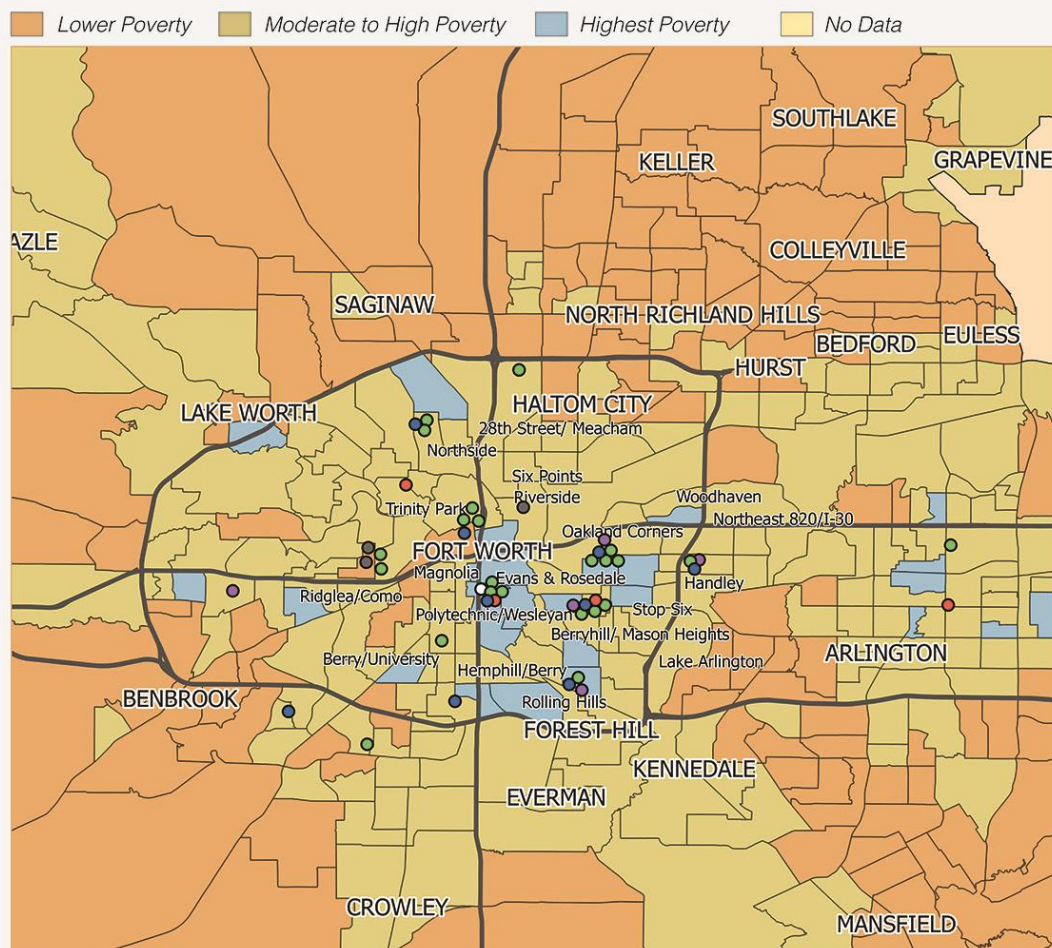
### ***Early Learning Programs***

Boys and Girls Clubs of Arlington  
Camp Fire First Texas  
CASA of Tarrant County  
Center for Transforming Lives  
Child Study Center  
Clayton YES!  
Communities in Schools of Greater Tarrant County  
East Fort Worth Montessori Academy  
Educational First Steps  
First3Years  
Fortress Youth Development Center  
Fort Worth Library  
Fort Worth Museum of Science and History  
Fort Worth SPARC  
Girls Inc. of Tarrant County  
Kids Hope USA  
Lena Pope  
Lighthouse for the Blind of Fort Worth  
Literacy United  
Mission Arlington/Mission Metroplex  
Mission Central Metroplex  
Performing Arts Fort Worth  
Presbyterian Night Shelter  
SafeHaven of Tarrant County  
The Learning Center  
United Community Centers  
Uplift Education  
YMCA of Metropolitan Fort Worth



# 2016 ToolBox Grant Cycle | Tarrant County, Texas

Total Poverty Rate by Census Tract, 2010-2014



U.S. Census Bureau, 2014 American Community Survey (5-Year Estimates) Tables DP03 (Poverty Rate Tables)

## Toolbox Grant Categories

- Family Leadership & Supports
- Health & Wellness
- Early Learning Programs
- Responsive Schools
- Data & Measurement
- Public Awareness & Policy

**NORTH TEXAS  
COMMUNITY  
FOUNDATION**  
*Philanthropic Solutions*

This map displays the location of 2016 ToolBox grantee interventions and highlights their focus categories. The base of the map is made up of census tracts in Tarrant County that are rendered (orange, tan, or blue) to show the rate of poverty within the area. Note the lack of programs and funding support in neighborhoods such as Western Hills and parts of Arlington.

## The Work Continues



The ELA is a community collaboration of more than 50 organizations focused on early learning from ages 0-8. Together, they seek to improve outcomes for all Tarrant County children by aligning the goals of early child care providers and K-12 systems.

The ELA has three priority areas:

**Assessment and Data Sharing:** Provide parents, early educators, teachers and service providers with access to common information that will improve how each supports the learning and development of the children in their care.

**Quality Improvement through Professional Development:** Develop a continuum of educational opportunities – from one-time workshops to graduate degrees in higher education – for professionals working with children from birth through age 8 so that more children have access to high quality early learning.

**Family Engagement:** Ensure that parents are empowered to be their child's first teachers and most important advocate. Offer training and technical assistance for agencies and schools serving families so that providers can move from traditional to transformational family engagement.

The network is hosted by Fort Worth ISD, was started with technical assistance from the National League of Cities, and is supported by the North Texas Community Foundation, among others.

For more information, please visit: [earlylearningntx.org](http://earlylearningntx.org)

---

### ***Fort Worth literacy partnership***

A coalition of business, civic, education, philanthropic, nonprofit and volunteer leaders committed to ensuring that 100 percent of Fort Worth third-graders are reading on grade level – by 2025.

The Fort Worth literacy partnership will serve as a backbone organization that connects and supports existing initiatives, programs and providers through data, communications, and facilitation to dramatically improve early childhood results. The partnership will begin with a tight focus on the Fort Worth school district and its 34,000 students in pre-K through third grade while laying a foundation for an effort that can grow to serve and partner with organizations across the region.

The Fort Worth literacy partnership has extraordinary leadership in Mayor Betsy Price, Fort Worth school district Superintendent Kent Scribner and Matt Rose, executive chairman of BNSF Railway, who will lead the partnership's executive council.

For more information, please visit: [readfortworth.org](http://readfortworth.org)

For more information, contact the North Texas Community Foundation: 817-877-0702.